

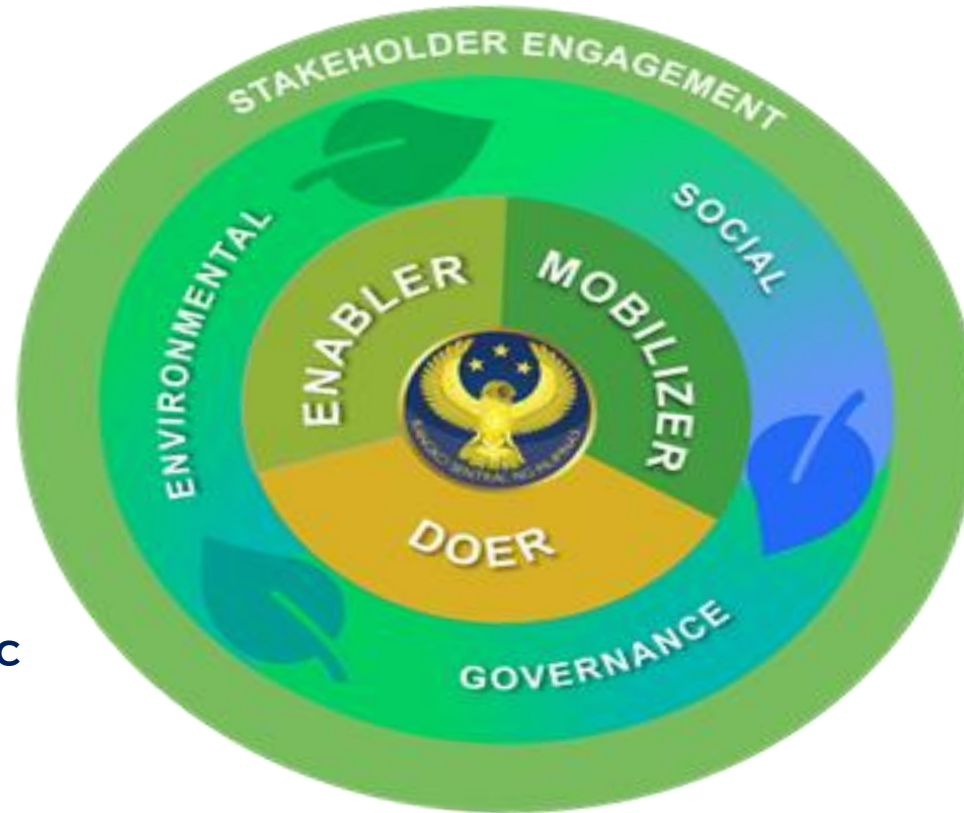
Sustainable Finance Framework



BSP AS ENABLER, MOBILIZER, & DOER

- **Financial Supervision:**
Corporate and risk governance standards;
Sustainable Finance Framework
Environmental and Social Risk Management Framework

- **Operations:**
No to Single-Use Plastic Policy, MB Paperlite Facility; iHRIS

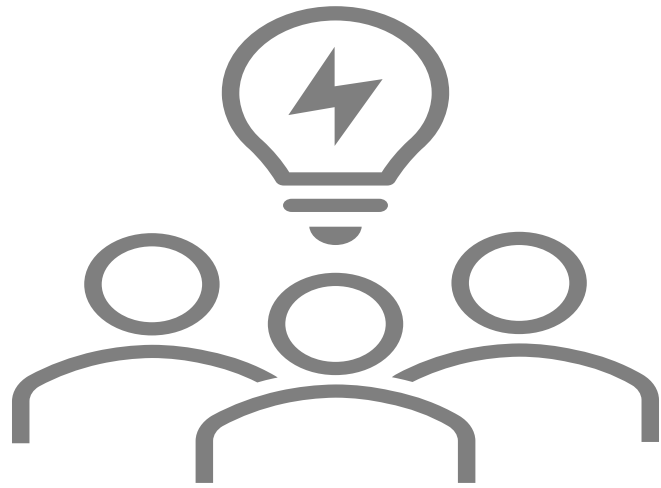


- **Reserve Management:**
Participation in Green Bond Fund launched by the BIS
- **Building Management:**
New Clark City, BERDE Certification

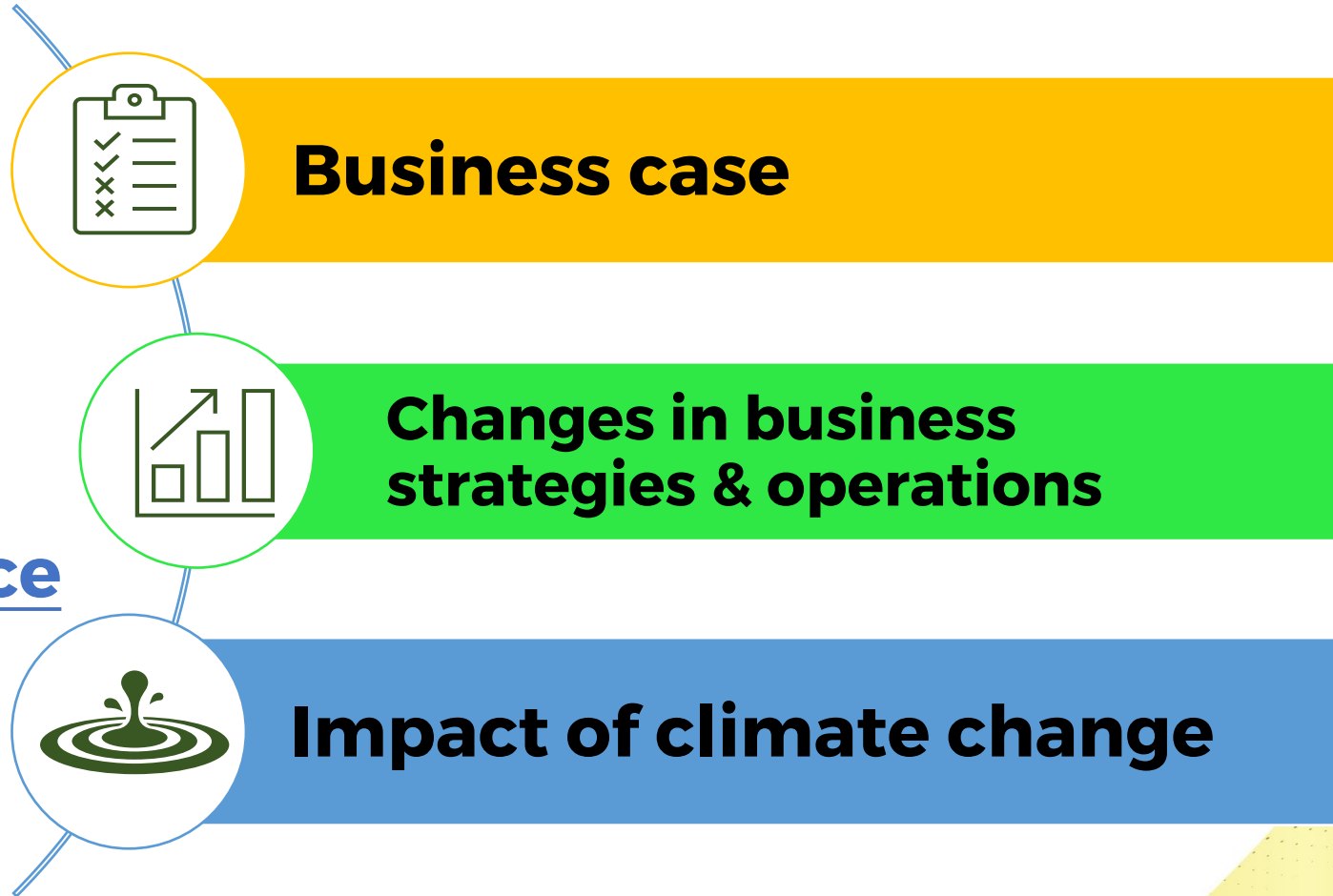
SUSTAINABLE CENTRAL BANKING ROADMAP



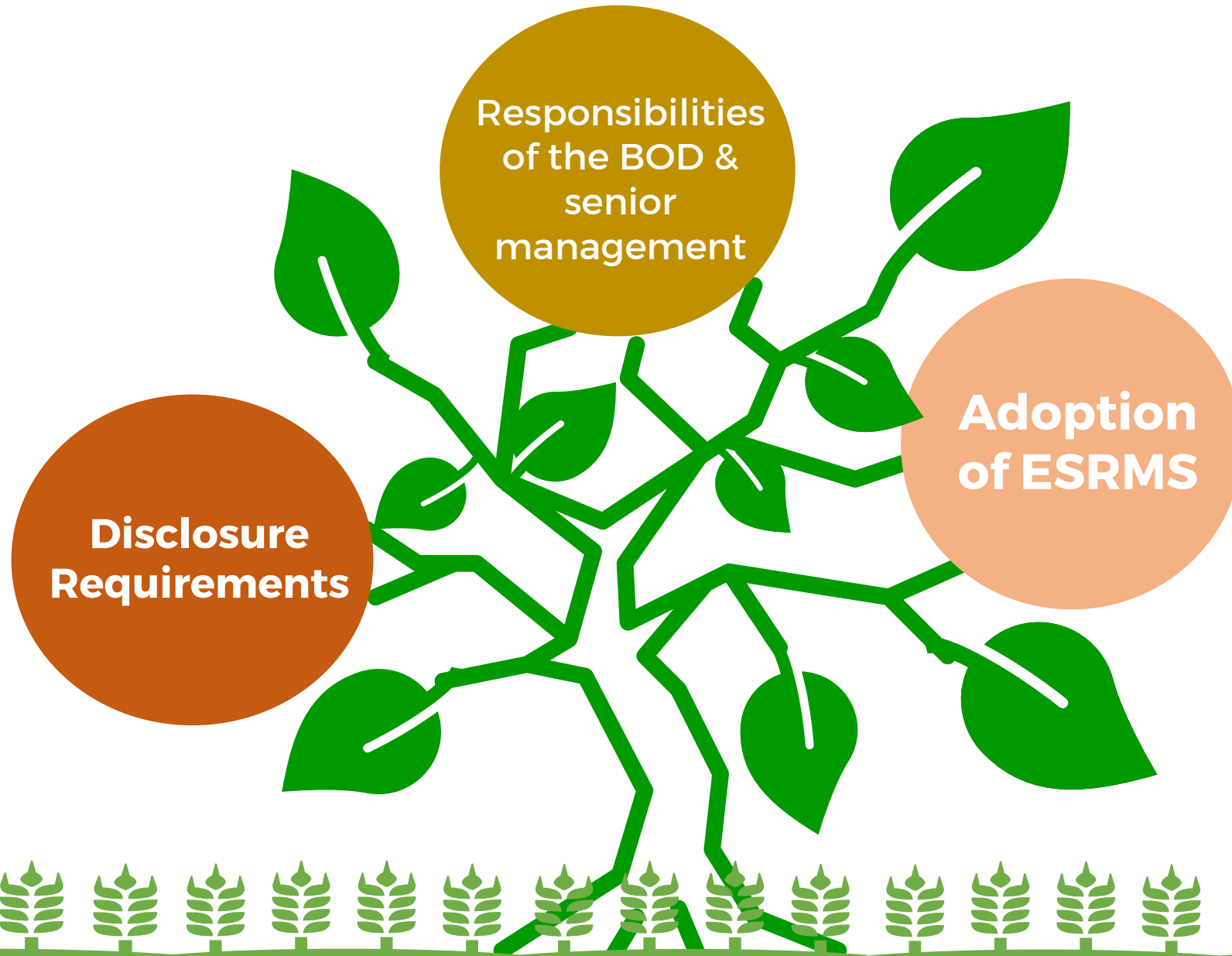
KEY TAKE-AWAYS FROM THE AWARENESS AND CAPACITY BUILDING ACTIVITIES



Sustainable Finance
Framework



CIRCULAR No. 1085 – SUSTAINABLE FINANCE FRAMEWORK



ROLE OF BOARD AND SENIOR MANAGEMENT



Promote a culture that fosters environmentally and socially responsible business decisions

Enhance the banks' risk management system

Provide adequate resources for capacity building and adoption of the sustainability agenda

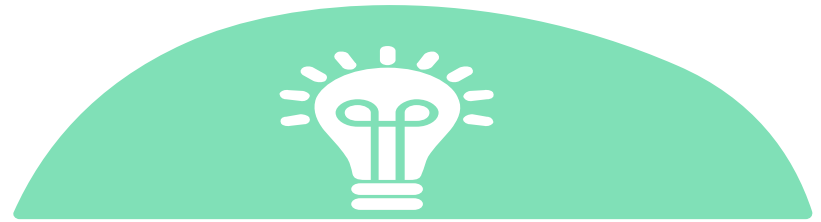
Promote transparency and provide adequate disclosures



ENVIRONMENTAL AND SOCIAL RISK MANAGEMENT SYSTEM

**Builds on
existing
standards**

1



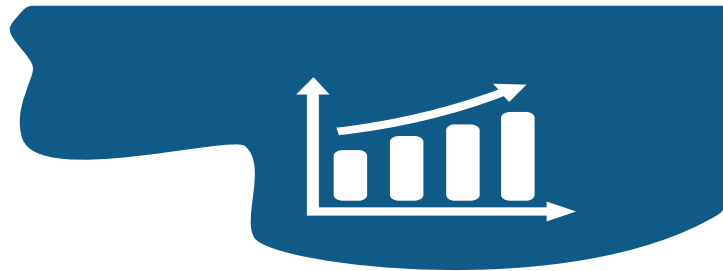
2 **Policies,
procedures and
tools**

**E&S
objectives
and risk
appetite**

3



4 **Proportionality**



DISCLOSURE REQUIREMENTS

 Adequate Disclosure



Republic of the Philippines
Securities and Exchange Commission

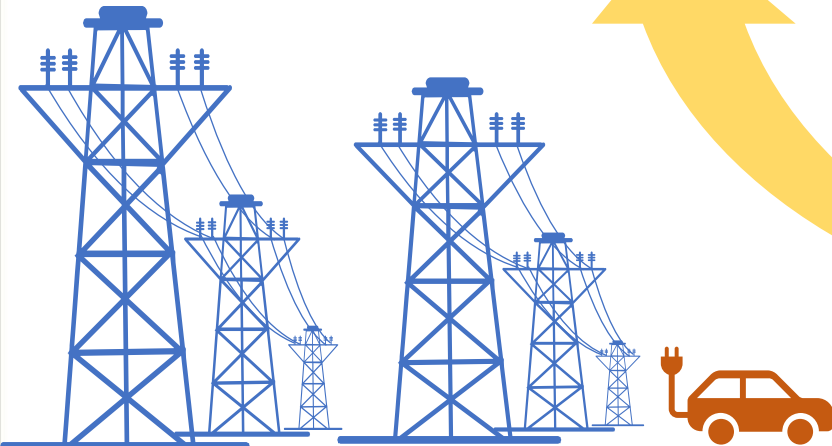
Sustainability reporting
Guidelines for PLCs



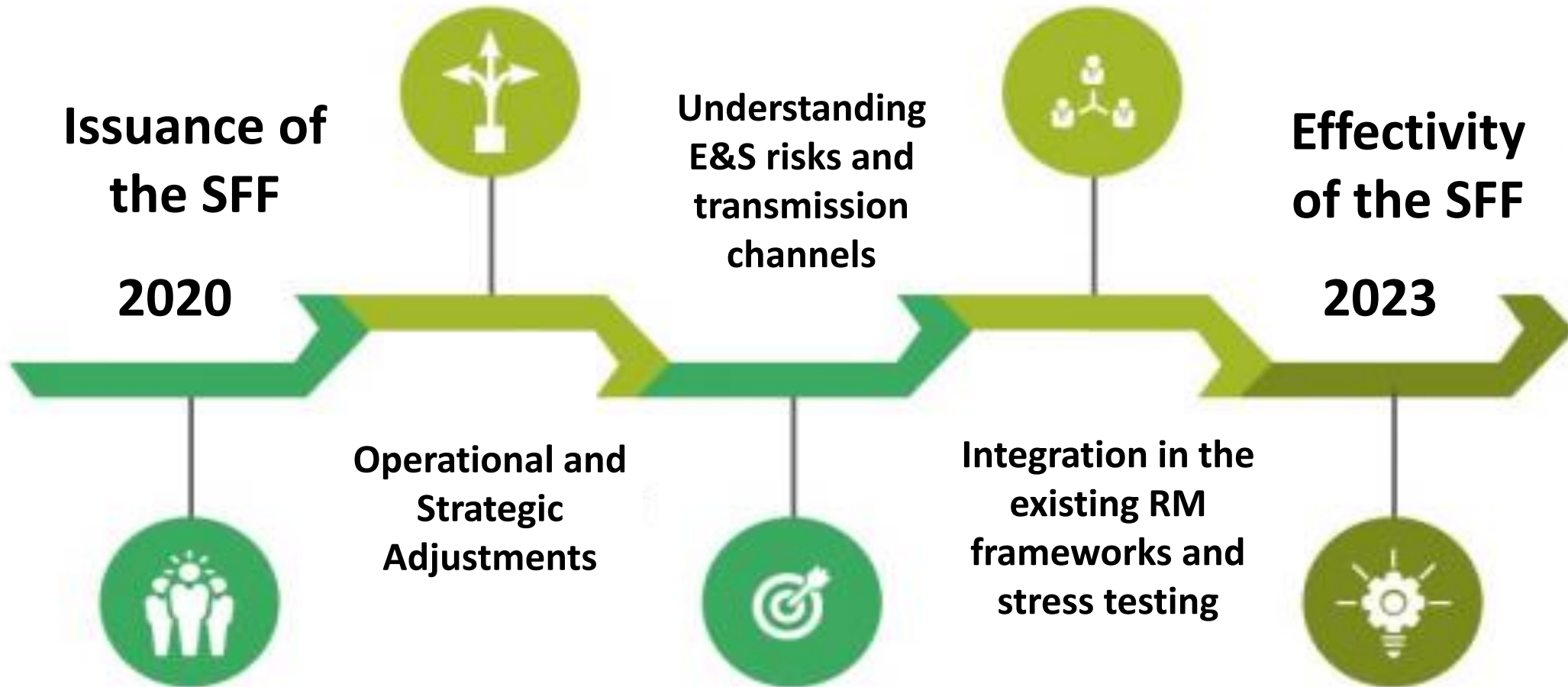
BANGKO SENTRAL NG PILIPINAS

SFF Disclosure
Requirements

Promotes
Transparency



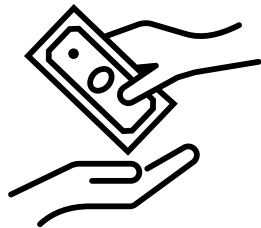
THREE YEAR TRANSITION PERIOD



PHILIPPINE SUSTAINABLE FINANCE ROADMAP



Policy

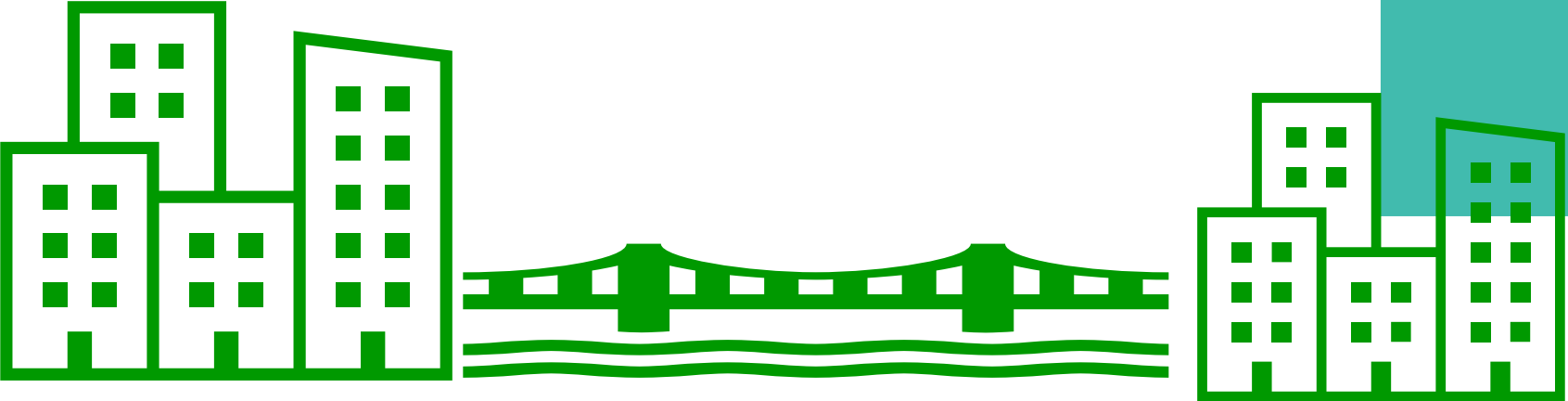


Financing

\$ Investment



The Philippine Sustainable Finance Roadmap

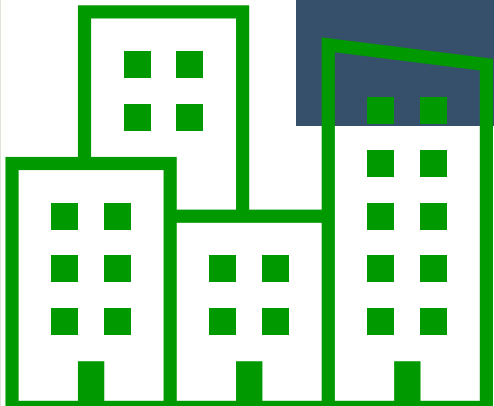


PHILIPPINE SUSTAINABLE FINANCE GUIDING PRINCIPLES



The Philippine Sustainable Finance Guiding Principles

- 1 Climate Change and Adaptation
- 2 Promoting Transition to a Low Carbon Economy
- 3 Resilient Food Systems
- 4 Sustainable Cities
- 5 Sustainable and Resilient Infrastructure
- 6 Environmental Management and Conservation
- 7 Prohibited Activities



Thank you!

